



TATRAMAT

new

GAS

STORAGE

WATER HEATERS

HT 80 K

HT 120 K

HT 150 K



TATRAMAT
Water heaters

HOME **HEAT** **PLEASURE**

GAS STORAGE WATER HEATER

HT 80 K, HT 120 K, HT 150 K

Description of the boiler and application

Water heater of HT type is storage water heater with direct heating of utility water with draught of combustion gas into chimney. Heating is performed by atmospheric burner. The unit is designed for wall hanging. User has the possibility to regulate water temperature by setting control knob of gas regulation valve in the range from 30 to 70 °C. Water temperature is automatically kept in desired pre-set value. Automatic reheating is activated after usage a volume of 20 liters or water temperature decrease in 5 °C.

TECHNICAL PARAMETERS				
Name	Measure	Parameter value		
Type		HT 80 K	HT 120 K	HT 150 K
Rated volume	l	80	120	150
Rated output (kW)/power	kW	4,9	5,5	5,5
Efficiency	%	87	87	87
Max. gauge pressure of water	MPa	0,6	0,6	0,6
	bar	6	6	6
Adjust. operating temperature of water	°C	30 až 70	30 až 70	30 až 70
Time of heating from 20°C to 60°C	min	65	83	104
Weight excl. water	kg	52	65	78
Type of used fuel	natural gas			
Nominal gauge pressure of gas	kPa	2,5	2,5	2,5
Gas consumption during operation	m ³ /h	0,52	0,58	0,58

Basic dimensions of water heater (picture 1 a)

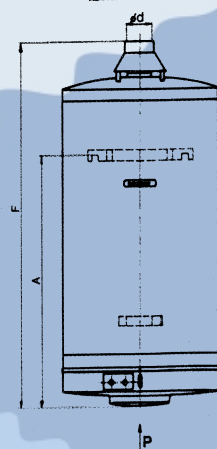
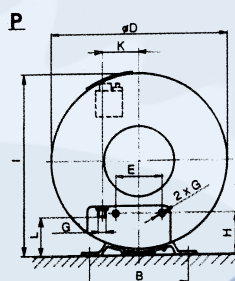
TYP	HT 80K	HT 120 K	HT 150 K
A	615	920	1170
B	350	350	350
φ D	520	520	520
φ D inner	100	100	100
E	100	100	100
F	1005	1240	1550
G	1/2"	1/2"	1/2"
H	120	120	120
I	535	535	535
K	124	124	124
L	140	140	140
M	512	820	1070

dimensions are listed in mm

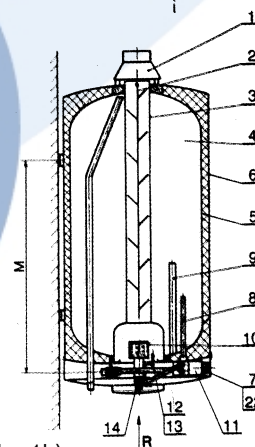
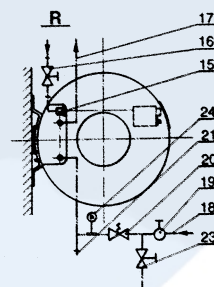
DISPOSITION OF WATER HEATER (picture 1 b)

1. Draught diverter
2. Flue swirl unit
3. Burning area with flue pipe
4. Storage tank
5. Insulation layer
6. Jacket
7. Cover
8. Magnesium anode
9. Thermostat tube
10. Main burner
11. Gas regulation valve with accessories
12. Pilot burner
13. Ignition electrode
14. Jet of main burner
15. Gas connection (external thread G 1/2")
16. Gas blocking tap /x/
17. Warm water outlet
18. Cold water inlet
19. Water blocking tap /x/
20. Safety valve with back flap
21. Drain valve (plug G 1/2")
22. Removable cover for gas valve setting
23. Testing tap /x/
24. Manometer /x/

/x/ - not included in delivery of water heater unit



Obr. 1a)



Obr. 1b)

 **TATRAMAT**
Water heaters

TATRAMAT a.s.
059 51 POPRAD, SLOVAKIA
tel.: + 421 92 (52) / 7731 636
Fax: + 421 92 (52) / 7127 500
<http://www.tatramat.sk>
e-mail: tatramat@tatramat.sk